

SUPPORT NETWORK

Experience Our Mobile Service Van For Fast And Reliable Solutions



ADDRESS:

North Zone
ESCORTS LTD. - CONSTRUCTION EQUIPMENT
4th Floor 409, Jasola Vihar,
Elegance Tower, Near Apollo Metro Station,
New Delhi -110019

East Zone
ESCORTS LTD. - CONSTRUCTION EQUIPMENT
Eco Centre, Ambuja Neotia,
609, 6th Floor, EM Block,
Salt Lake Sector-V, Kolkata – 700091

West Zone
ESCORTS LTD. - CONSTRUCTION EQUIPMENT UNIT 1,
3rd Floor, A-Wing, Times Sqaure,
Andheri - Kurla Road, Opp. Mittal Industrial Estate,
Andheri (East), Mumbai 400059 (Maharashtra)

South Zone
ESCORTS LTD. - CONSTRUCTION EQUIPMENT
1st Floor, Bearing No - FF 2, in Subham Square,
Survey Number 41/9, 1st Main Road and 1st Street,
Tarambakkam, Porur,
Chennai - 600116

WHEN YOU NEED EXTRA
3012XTR



Max. Load Lifting Capacity 30T | Max. Boom Height Without Fly Jib: 12.1m | Creep Speed: 1.3 Kmph
Equipment Monitoring System | Auto Levelling Hook Block



Customer Support No.:
1800 180 4488
(Timings: 9.30 am - 6.00 pm, Monday to Friday)

E-mail:
ece.marketing@escorts.co.in

Escorts Construction Equipment: Plot No. 219, Sector-58, Ballabhgarh- 121004, Faridabad, Haryana (INDIA) Tel.: 0129-2306574/2306598/2306571
Fax: 0129-2306572 **Website:** www.escortsgroup.com

ESCORTS  **WHITE LINE**

SPECIFICATIONS

RATED CAPACITY

| | |
|-----------------|--------------|
| 30 Ton at | 1.5 m radius |
| 4.8 Ton at | 8.5 m radius |
| Max Hook Height | 12.1 m |

ENGINE

Diesel engine of Volvo Eicher make, model CEV BS III, turbo charged water cooled, developing 137 HP @ 2200 ERPM

TRANSMISSION & CLUTCH

| | |
|------------------|---|
| Drive | "Mechanical- 2WD (Rear Wheel Drive) with Hi/Lo" |
| Type | VECV: 6F+1R Transmission |
| Clutch | Dry Friction Plate |
| Speeds | 12 forward and 2 reverse |
| Max Travel Speed | 40Kmph |
| Creep Speed | 1.3 Kmph |
| Gradeability | 35% (Unladen) |

STEERING

| | |
|--|-----------------------------|
| Full Power orbital with twin Hydraulic double acting Cylinders | |
| Type | Fixed Steering Column |
| Articulation | Up to 35° on either side |
| Turning Radius | 9.1 m (Outer) / 6.4 (Inner) |

CONTROL VALVE

AXLES

| | |
|-------|--|
| Front | Dead Axle-Rigid Mounting |
| Rear | TATA Drive Axle- Mounted on Leafspring |

STRUCTURE Frames and boom are fabricated with high tensile steel plates, sections and with proven technology.

OPERATOR'S CAB & CONTROLS Operator cabin with steel constuction, excellent visibility for craning operation, adjustable seat, automotive type controls like steering wheel, brakes, accelerator pedal, gear shifting etc.

BRAKES

| | |
|---------|--|
| Service | Front brake Pneumatically assisted hydraulic brakes and Rear brake Fully Air operated Brakes |
| Parking | Spring Loaded, Air-released Brakes on Rear Axle |

TYRES

| | |
|-------|---------------------------|
| Front | 12 x 24 - 20PR [4 Nos.] |
| Rear | 17.5 x 25 - 20PR [2 Nos.] |

BOOM

3 Part Boom- Hydraulically Powered & Fully Synchronised Luffing Range -3° to +65°

HOIST MECHANISM

6 Falls, Hydraulic Winch

ELECTRICAL SYSTEM

24 V Negative Earth, 75 AH x 2 Battery

DIMENSIONS

| | |
|-------------------|-----------|
| Wheel Base | 4,800 mm |
| Overall Length | 10,475 mm |
| Overall Width | 2,870 mm |
| Overall Height | 3,100 mm |
| Front Wheel Track | 2,230 |
| Rear Wheel Track | 2,080 |

OPERATING WEIGHT TRAVEL WORK (BOLTABLE CWT)

| | | |
|-------------------|--------|--------|
| Front Axle Weight | 8,600 | 7,600 |
| Rear Axle Weight | 10,200 | 13,700 |
| Total Weight | 18,800 | 21,300 |

CAPACITIES

| | |
|----------------|-----|
| Fuel Tank | 200 |
| Hydraulic Tank | 170 |

SAFETY SYSTEM

Safe Load Indicator
Overhoist audio warning system
Counter balance protection valve in the lift line against hose burst.
Safety brake on hoist
Visual warning against parking brakes ON

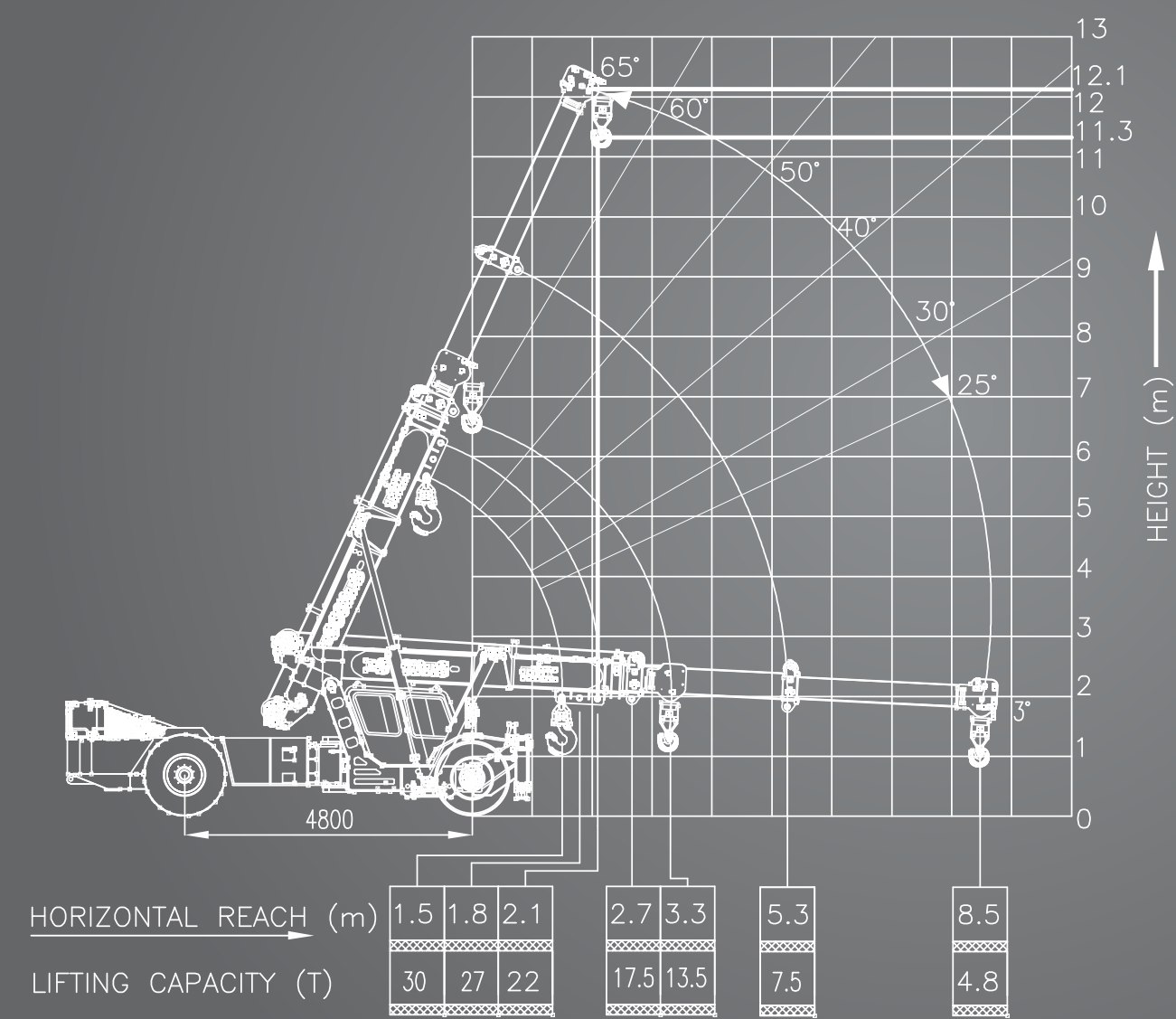
STANDARD ACCESSORIES

Drag Winch - Line pull 2,500 Kg
Operator Cabin
Rear view mirror
Reflectors
Turn Indicator & Reverse Lamp
Lockable Battery Box
Mobile Charger
Cabin Fan
Tyre Guard
Reverse Parking Camera
Telematics
Tow Hook
Articulation Lock

OPTIONAL ACCESSORIES

Water Bottle Carrier
Beacon Light
Led Work lamp on Boom

TECHNICALS



Rated loads are calculated for operation on leveled surface.



SLI – Safe Load Indicator



Drag Winch



Reverse Camera



Helper Seat

(Accessories as shown in the picture may not be the part of standard fitment and are subject to change without prior notice.)